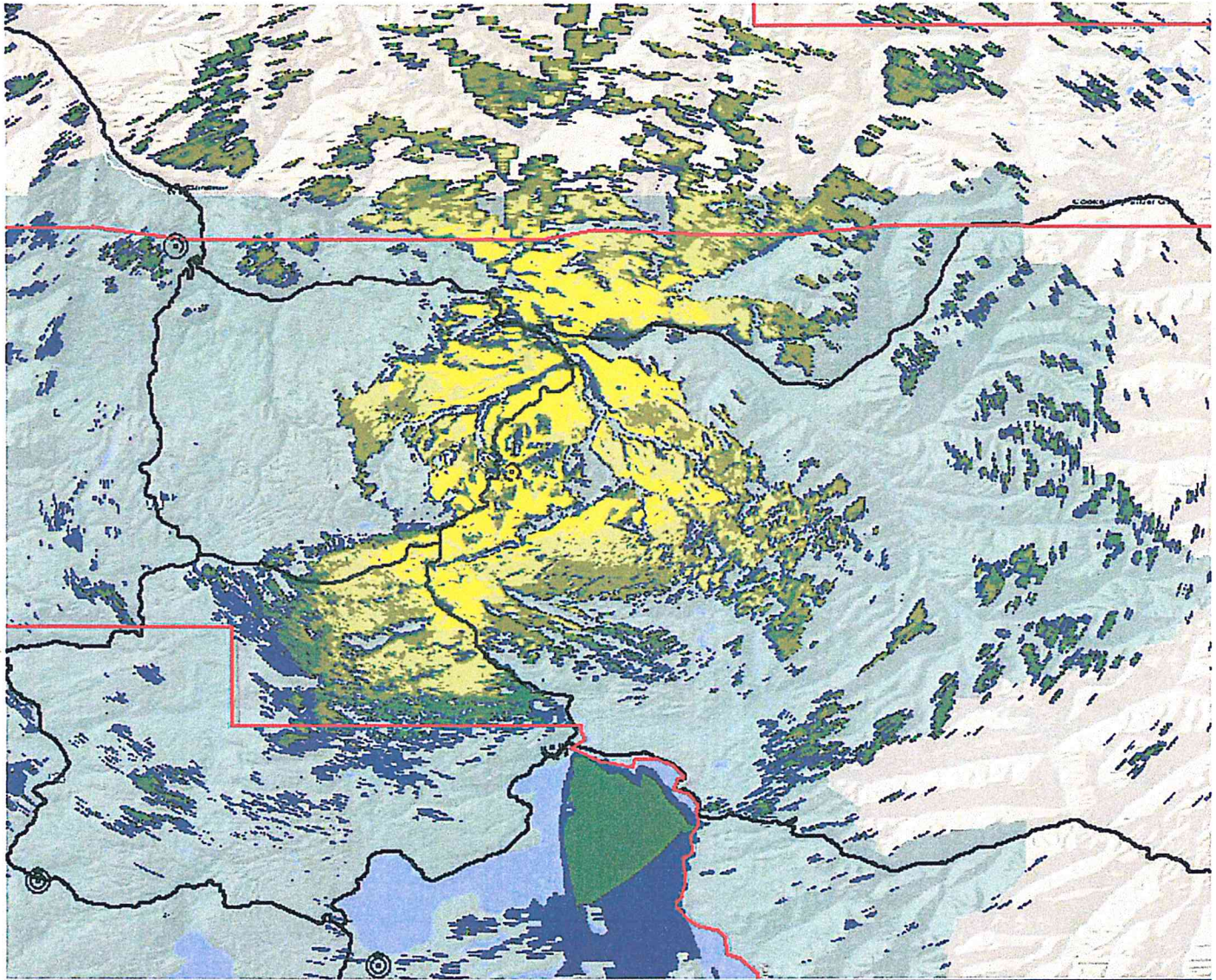


Below is a coverage plot of our coverage with the 3-sector design (notice the substantial improvements in the Canyons area
[https://mail.google.com/mail/u/0/?ui=2&ik=65993e3ddd&view=pt&q=mt washburn&qs=true&search=query&th=1422e6e3dbfbd998](https://mail.google.com/mail/u/0/?ui=2&ik=65993e3ddd&view=pt&q=mt%20washburn&qs=true&search=query&th=1422e6e3dbfbd998)

below is a coverage plot of our coverage with the 3 sector design (notice the substantial improvements in the canyons area)



I know that there are questions about the need/use of a third sector facing 120 azimuth. As you can see in the plots, moving from the current Omni design to the 3-sectored design will not really substantially impact the coverage that we have currently in the Backcountry areas.

If we don't go with the third sector, we will be losing a substantial amount of CGSA (contour rings that the FCC issues licenses based on), which would be difficult to process on our end.

I hope these plots help give a visual representation of what the impacts will be here, and if you need anything additional, please don't hesitate to let me know.