

A new antenna mounting structure would be constructed at the summit of Mt. Washburn to relocate existing antennas and microwave dishes from the fire lookout structure (Fig. 8). This would address current safety concerns and viewshed impacts from the historic lookout. A new secure equipment building would be placed near this new mounting structure, and would not exceed one story in height (10'-15').



Figure 6 Wastewater Treatment Plant Entrance, Fishing Bridge

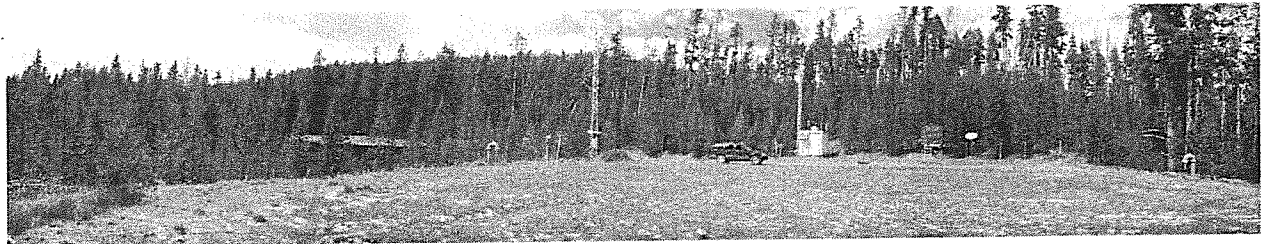


Figure 7 Water Tank Site, Lake

The Old Faithful cell tower would be relocated to an area near the Old Faithful water treatment plant when it becomes feasible to reduce the overall visibility of the tower. This would not occur before the current right-of-way (ROW) agreement with the cell phone provider expires in 2009. This relocation could result in a slight decrease in service near the Old Faithful developed area along a few miles of the Grand Loop Road.

The equipment and antennas associated with cell phone service atop Bunsen Peak would be relocated to the current Elk Plaza. New infrastructure would be added

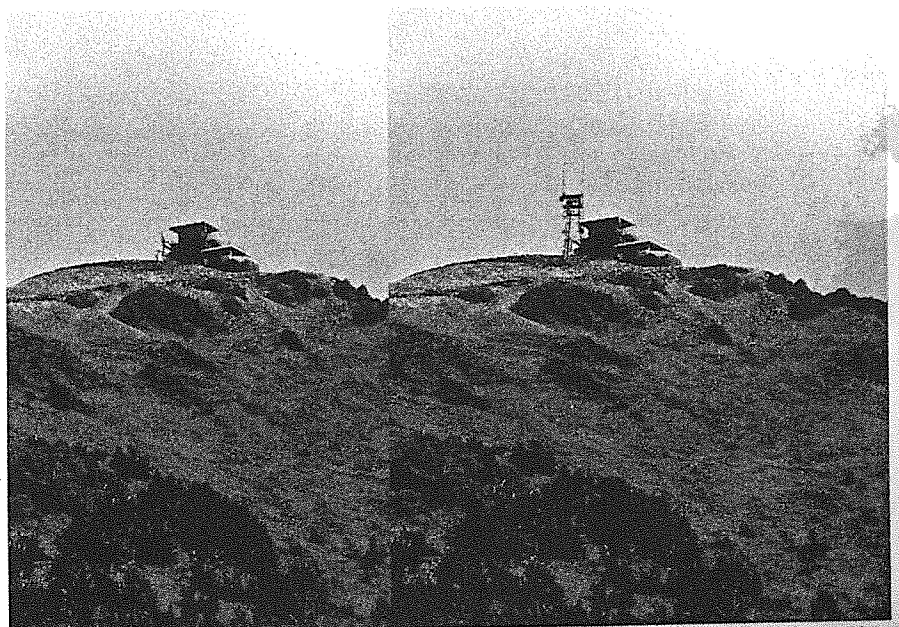


Figure 8 Photo simulation concept for an antenna platform on Mt. Washburn
Existing conditions are shown in the left-side image

Comment Text: the proposed "antenna platform" on Mt. Washburn is unacceptable. As designed, the proposed multi-story platform makes the area look worse, and Yellowstone must do better to reduce the visual impacts

Comment Text: am told that the antenna platform proposed for Mt. Washburn would be another blight on our scenic landscape. Surely there is an alternative.

Comment Text: there must be a better, less obtrusive alternative to the very large and obtrusive 'antenna platform' depicted in the photo simulation on p. 28 of the dEA

Comment Text: the visual impact of the Mount Washburn tower must be minimized

Comment Text: Photo simulation of Mt. Washburn with new cell tower: A tower that looks like this photo simulation should not be allowed anywhere in the world's grandest national park, especially not on top of a famous peak.

Yellowstone has an obligation to preserve viewsheds and reduce visual impacts through NHPA and NPS policies.

Comment Text: towers will mean a disturbance to some of the most scenic vistas

Do not try to disguise cell towers as fake trees, they're worse than the cell tower itself.

Comment Text: Oh, yeah, and PLEASE, no "Frankenpines!" I'd rather see a bare cell tower than one of those mutants.

Reduce or consolidate unneeded and/or visually obtrusive wireless infrastructure.

Comment Text: reduce and consolidate unneeded and/or visually obtrusive wireless infrastructure at Old Faithful and Bunson Peak

(Response) The siting criteria listed in the Wireless Plan/EA address the need to maintain the unobstructed views within the park. As such, the Old Faithful cell tower would be moved to a less visible site, and much of the equipment atop Bunsen Peak would be removed or relocated to clean up the site.

To respond to comments, further site design must be completed for Mount Washburn. While the preferred alternative included construction of a new structure to relocate the existing antennas already located on the Mount Washburn fire lookout building, the Park will consider other possibilities to minimize or reduce visual intrusions for visitors and to address safety concerns regarding the electro-magnetic waves.

The Park would consult with the Wyoming State Historic Preservation Office and other professionals to reach an acceptable design for the Mt. Washburn wireless communications facility. This facility would be designed to minimize visual impact on visitors and the historic structure, while at the same time addressing the safety and security aspects of the site's proximity to a highly-used visitor destination.

Mt. Washburn will continue to serve as the primary communications hub for the park, with multiple antenna, dishes, and electronics equipment at the site.